



COPYCOUNTER 3

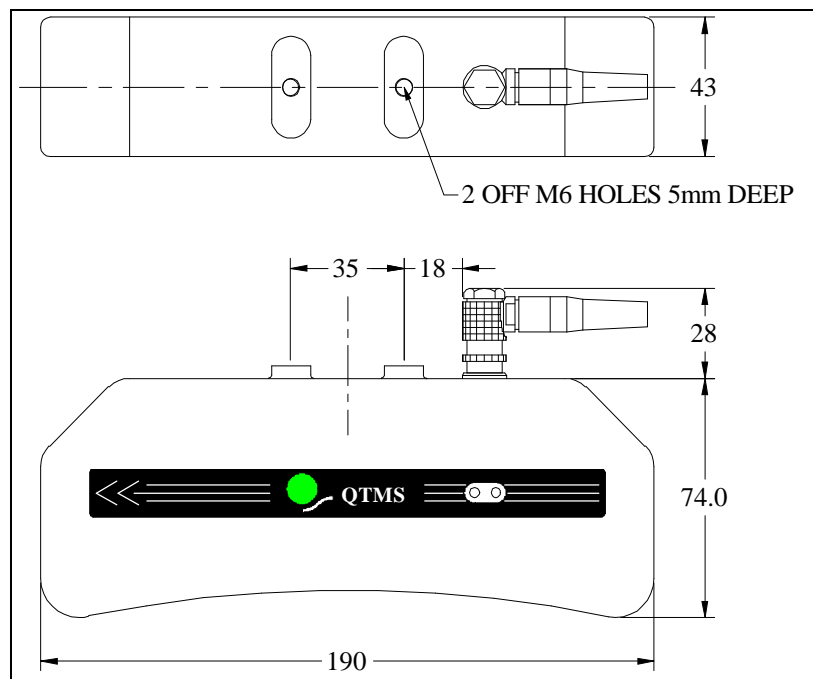
Manual

Contents:

Page	Title
2	Technical summary
3	Mounting
4	Electrical connection
5	Only if you need to
6	Adjustment of output pulse time
7	Adjustment of sensitivity

Technical Summary:

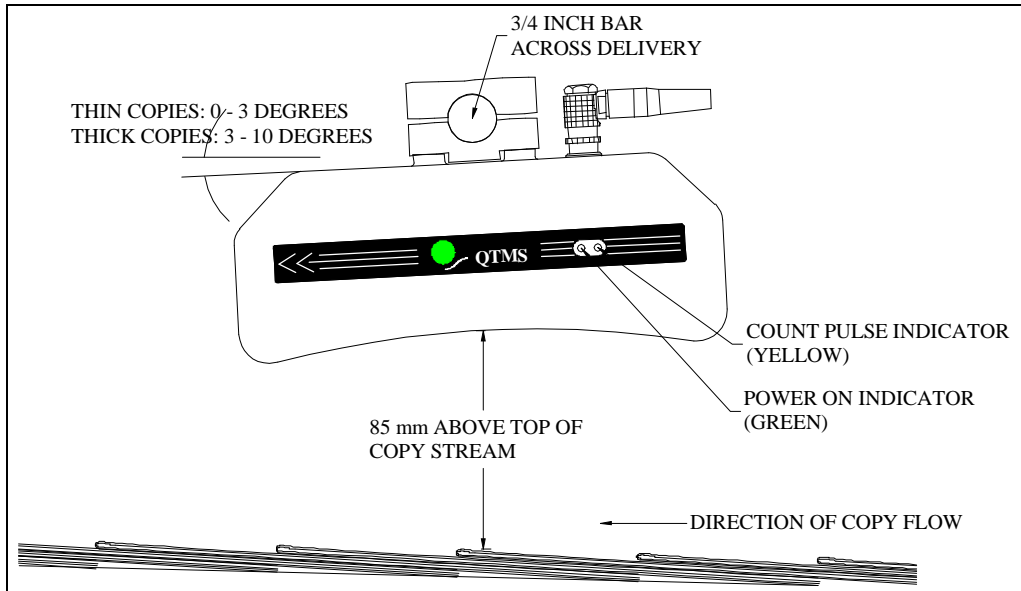
Count rate:	Better than 700,000 copies per hour
Product Range:	Single overlapped sheet upwards
Operating distance:	85mm +/- 20mm
Minimum overlap:	5mm
Power supply:	18-39 VDC, 1 volt ripple max., 210mA.
Fusing:	Automatically reset after power is removed from unit, on power input (both +V and 0V) and signal output +S.
Output signal:	Optoisolated NPN transistor output, 50VDC when OFF. 100mA when ON.
Output signal width:	5 m/sec, 12 m/sec and variable from 20 to 100 m/sec.
Weight:	600 grams
Dimensions:	length 190mm, height 74mm, width 43mm.



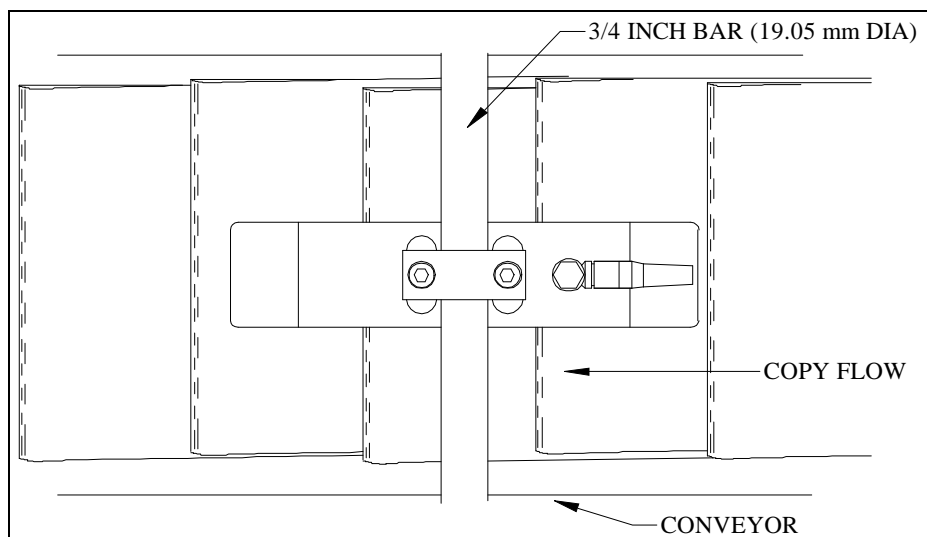
Parts per carton:	1 off Copycounter 3, 1 off 3/4 inch bar mounting block, 2 off M6 x 25mm hex cap head screws. 1 off 5 way Lemo connector and cable assembly. 1 off manual.
-------------------	---

Mounting the Copycounter 3:

View from side:

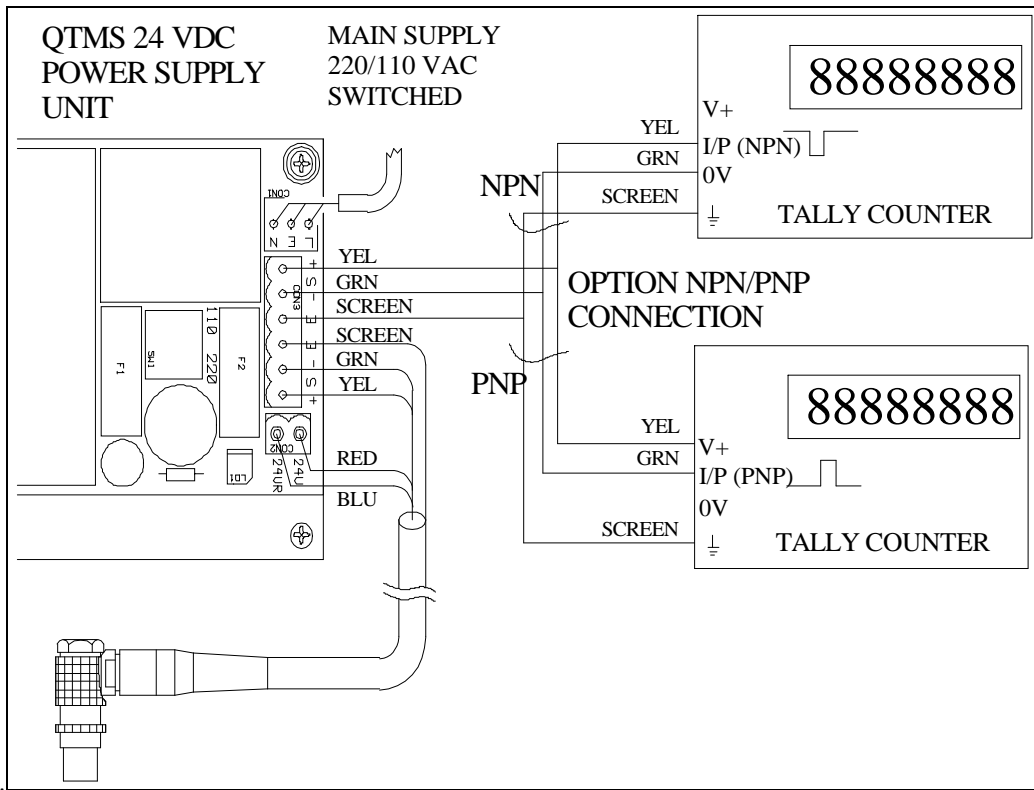


View from above:

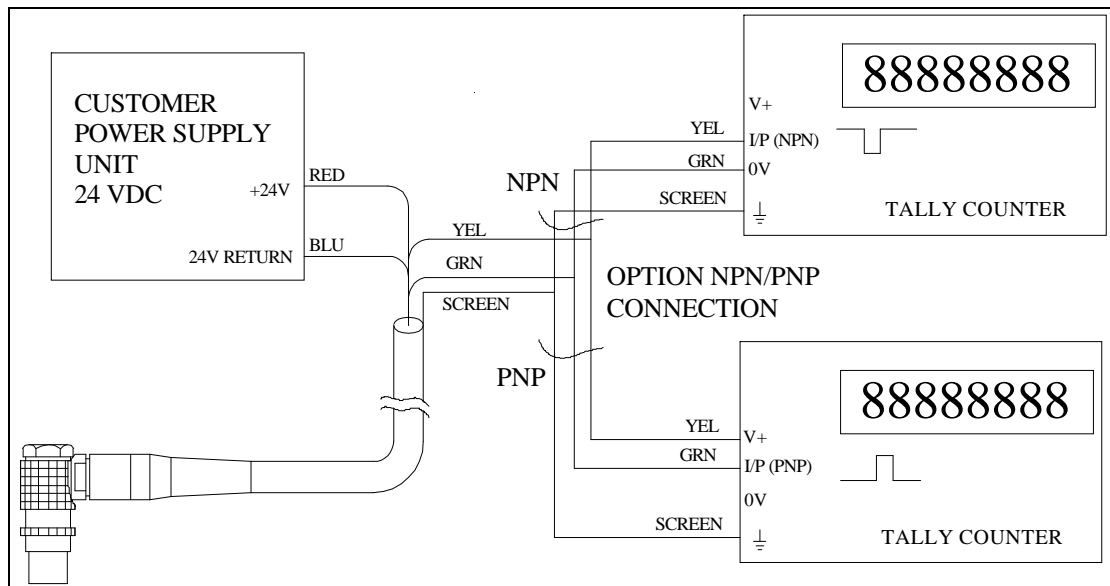


..

Electrical connection using the QTMS Power Supply Unit:



Electrical connection using your own supply:



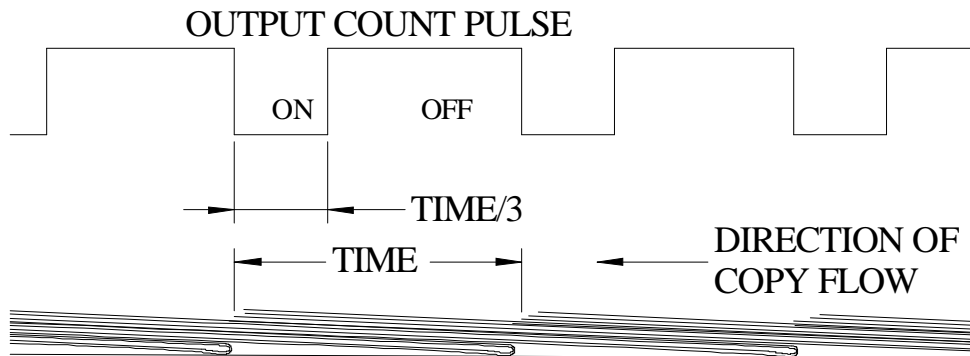
Only if you need to:

Adjust the output pulse length.

The *Copycounter 3* is factory set to link J4 to give a pulse time of 0.012 seconds (12 milliseconds) for each count. This time setting permits a counting rate of 120,000 copies per hour and is adequate for most applications.

If a higher counting speed is required move the link from J4 to J3

To count copies with more than one leading edge, (open edge leading or two-up copies counted as one) set the pulse to .02 seconds (20 milliseconds) and set the time with VR3 (see "Adjustment of output pulse time" instructions) to be 1/3 time between copies.



Adjust the sensitivity.

If the *Copycounter 3* undercounts then first check that the height and angle are as described under "Mounting" instruction - check that it is mounted the right way round. The Copycounter has a good depth of field and is height tolerant but the best height is the focal point at 85mm. If the Copycounter is mounted correctly then rotate the Copycounter to the horizontal. If the problem still persists then see "Adjustment of the sensitivity" instructions to increase the sensitivity.

If the *Copycounter 3* always overcounts first check that the electrical connections are correct as described under "Electrical connection" instructions. Then check the specification of the counting device to which the Copycounter is connected.

Check that the unit is not damaged and the glass window is clean.

If the problem has not been resolved then contact your supplier.

If the *Copycounter 3* sometimes overcounts first check the height and angle are as described under "Mounting" instruction. Increase the angle of the Copycounter slightly (rotate anticlockwise in the "Mounting" drawing) with the connector end moved upwards away from the copy stream. If the problem still persists then see "Adjustment of the sensitivity" instructions to decrease the sensitivity.

Adjustment of the output pulse time:

OUTPUT PULSE TIME SETTINGS

OUTPUT PULSE TIMING:

- J3 - 5 mS
- J4 - 12 mS (FACTORY SET)
- J5 - 20 TO 100 mS ADJUSTABLE AT VR3

VR3 - FULL CLOCKWISE 20mS, (FACTORY SET)
 FULL ANTI-CLOCKWISE 100mS
 (12 TURN LINEAR POTENTIOMETER)

OUTPUT TIMING CAN BE SET
 MANUALLY USING THE CHART
 OR MEASURED WITH AN OSCILLOSCOPE
 ACROSS TEST POINTS:
 TP11 AS SIGNAL -VE
 TP12 AS SIGNAL +VE

**DO NOT REMOVE ANY OTHER JUMPER LINKS OR ADJUST VR1 OR VR2
 DOING SO WILL VOID THE WARRANTY.**

Time in mSecs	Number of turns
20	0
30	1.5
40	3
50	4.5
60	6
70	7.5
80	9
90	10.5
100	12

Adjustment of the sensitivity

